



The Pansy Project Kansas

Students from Lawrence High School, Kansas respond to The Pansy Project on the occasion of a visit commissioned by Spencer Museum of Art, Kansas in April 2018 as featured in *The Pansy Project America*, a film by Paul Harfleet, released March 2019 available on: www.thepansyproject.com

SPENCER
MUSEUM of ART
The University of Kansas




"It's OK to be white!" Sabatini Multicultural Resource Center, Lawrence, Kansas



In March 2018 London based artist Paul Harfleet visited America, first he spent 10 days in Washington D.C. where he planted pansies at the sites of homophobia, he continued on to Lawrence, Kansas where The Spencer Museum of Art had invited the artist to contribute to their Big Botany exhibition. Harfleet was would embark on The Pansy Project in Lawrence Kansas, he'd host a Pansy Give Away to share the project with local residents and promote his presence at the museum. He showed a short film called 'Pansies' at the museum, then read from his book 'Pansy Boy' this was followed by a Q&A. The next day he would embark on a series of plantings across Lawrence.

Joey Orr, curator at The Spencer Museum of Art assisted with the project contacted Lawrence High School to seek permission for the artist to attend the school and plant a pansy to mark an anti-gay demonstration at the school. The school obliged and the artist was invited by Angelia Perkins to plant at the school and meet the students. The resulting interaction inspired Angelia Perkins to invite her students to respond creatively to the work of Paul Harfleet. The following pages share this work and the context the students gave. This document supports The Pansy Project America, a film made by Paul Harfleet to mark the anniversary of his trip, available now on www.thepansyproject.com and Vimeo.





Mustard Seed Allison Day

Religion is a pretty thing
When rainbows are locked away
And lips
Are made up with lies
Instead of lipstick

Even when rainbows blaze upon open doors
We are mistrusted—
Hatred is a seed that falls among weed-filled soil

I surround myself with rainbows—
Two kaleidoscopic,
One diplopic,
One heterochromatic

Lovely little Llywelyns
Laced with love and lycanthropy
Loved by the Lord yet leeches by lepers

Religion is an ugly thing
When rainbows are locked away
By false prophets whose Lucifer-filled dreams
Choke lions and lambs
Slowly

Belle Ray



As you wade through the toxic world while nothing feels the same.
The toxins and gloom sit on your shoulders like weights you can't shrug off.
Till you find it, hiding in the distance.
You run to get it and hide it, so no one else can take it.
In the days to follow you notice the weights deteriorating.
You smile, you know you've finally found it.
The cure.

Caitlynn Kliem

My main goal for this project was to comment on the destruction of nature by humans, especially in relation to human's plastic consumption. The plastic bags throughout my images represent the plastic pollution and how it harms plants and animals. The pansy is a representation of the beautiful things in nature, while the bee represents the not so pretty parts of nature. I placed the pansy inside of the plastic bag with the hand to represent how we care about the beautiful things but often forget and neglect the not so pretty things like bees, and other insects. By conserving just the beautiful things we take away attention from conserving nature so that our posterity can enjoy a clean Earth. With these images, I hope to raise awareness toward ensuring that all of nature, even the ugliest parts are safe and out of harm's way of human destruction.





Cora Griffin

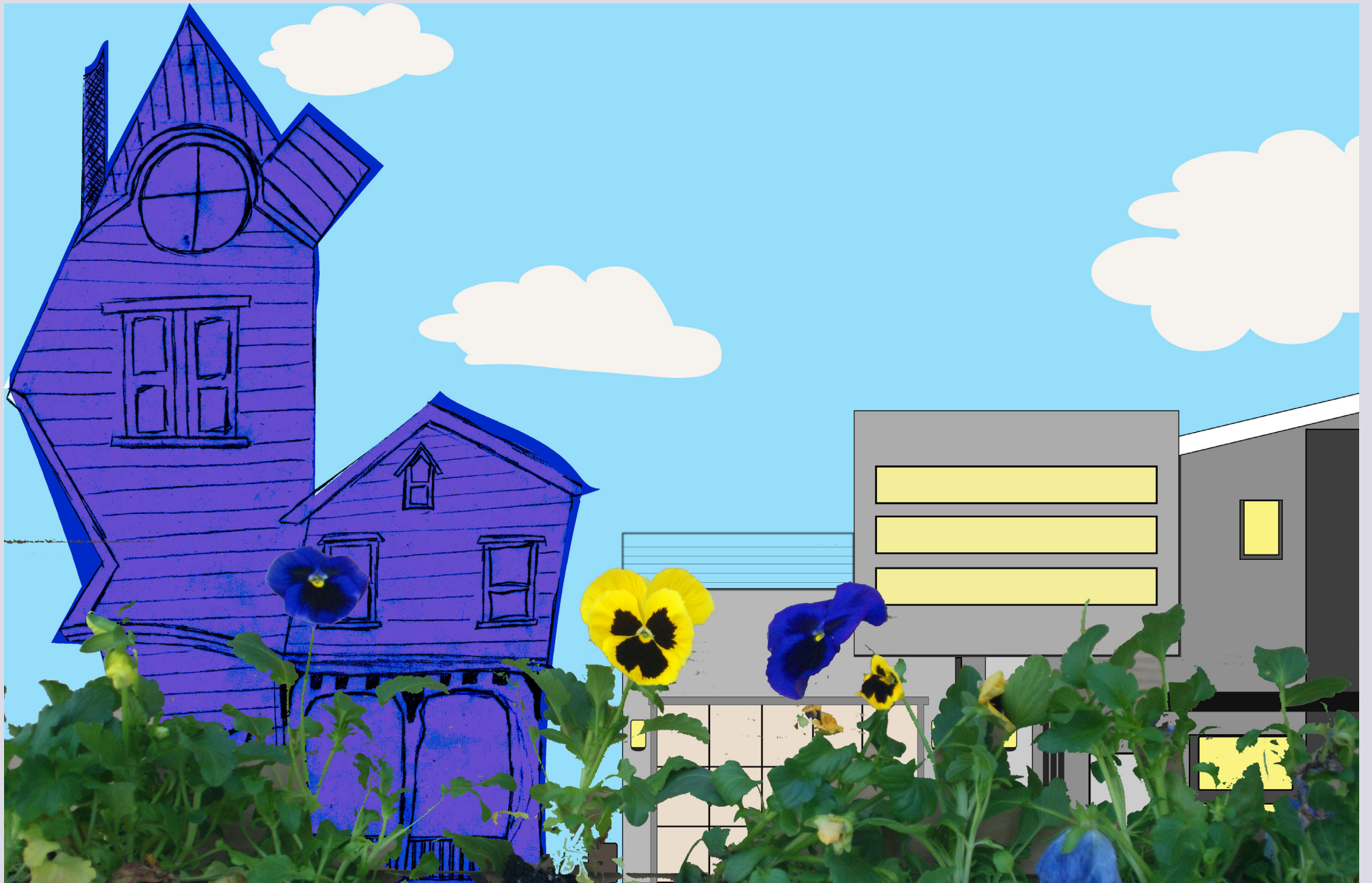
Children are like pansies, they have to be nurtured
As they age and are influenced by society, many shrivel up
When this happens, their color can be seen from the outside
but who they really are is hidden until someone takes the time to nurture them again



Pansy Duet

Elijah Jackson

"Pansy Duet" is part of my polyphony series that centers around instruments that represent harmony coming from independent different melodies. The pansies symbolize connections as well as opposing views between the subjects in the photograph. I always imagined pansies as symbols of empowerment and hope which I included blossoming out of the instruments. Music embodies powerful emotions in the same sense that humans interact both positively and negatively in melodies that drive one in harmony and dissonance.

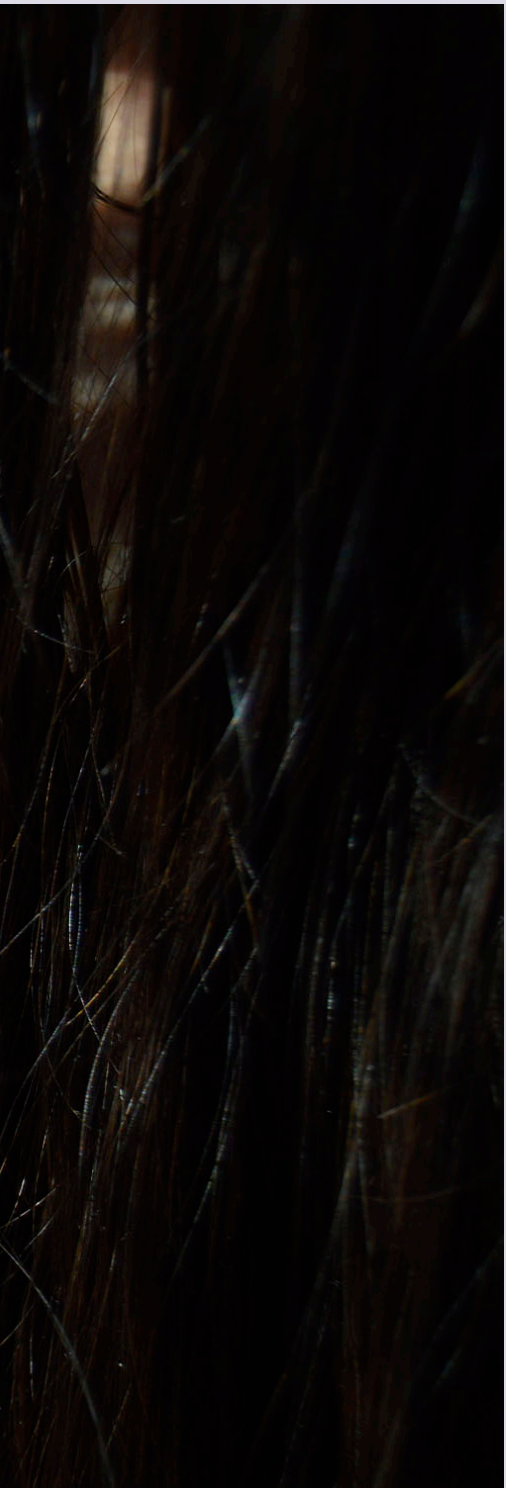


Gillette Blades

Jade Auchenbach

My piece, Pansy's and Gillette Blades, focuses around the LGBTQ community and the harassment we face on a daily basis. The word pansy is used as a slur for gay men and Gillette Blades is a phrase used as a slur for queer woman specifically bisexual women because they "slide both ways". This image represents the struggles queer people go through.





Jazzmine Bown Disturbing Rays



Man in Metal

Kira Auchenbach





A Rich Facade

Leslie Ostronic

People are dissected and put on display each and every day. Unfortunately, these displays do not include all of the pieces. Parts of the story are left out, covered up, or forgotten, whether it be intentional or not. Everyone starts behind a blacked out window, and as you learn or hear about them, pieces become clear. This must be exercised with caution, because sometimes the worst parts are revealed first, resulting in hesitation to see any more. To truly know someone, you must be patient enough to clear all of their window panes. Sometimes, the things you hear may even blur the reality of what really is behind the panes. You only see what you know of people, and many forget that. The only way to see someone clearly, is to see for yourself.



Malka Hampton

Influence

My parents have influenced my personality and what kind of person I am. The two images that I combined together are of my mom and my step dad. They were very involved in my life when I was figuring out my sexuality and although they each responded in different ways, they were nurturing and helpful as I was growing up. The flowers represent both my discomfort with myself initially and how I grew into myself as a person. My mother is holding a pansy which shows her initial internalized homophobia. She eventually educated herself and became much more accepting even though she was in the first place. The bottom image is my step dad holding different kinds of flowers which shows how he was relatively indifferent to my coming out.





Lavender Menace

This embroidered piece represents the history of people in the LGBT community, specifically lesbians and bisexual women. The Lavender Menace is a well-known lesbian movement in the 70s whose sentiments have continued to influence women today, including myself. Although some aspects of the movement can be viewed as problematic, the overall intention of it was good. I covered the face of my model in order to convey how the experiences and issues of lesbians pertains to all of us. The homophobic slurs in black are meant to convey the harmful words that people have used against queer people and how they were the reason for movements like the Lavender Menace.



Olivia Percich





Rafaela Silva



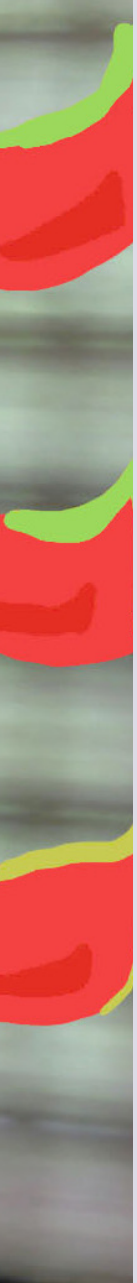
Satori Good



Building up Symon Knox







**Lobtser Claw,
False Bird-of-
Paradise
Xavier Watson**